



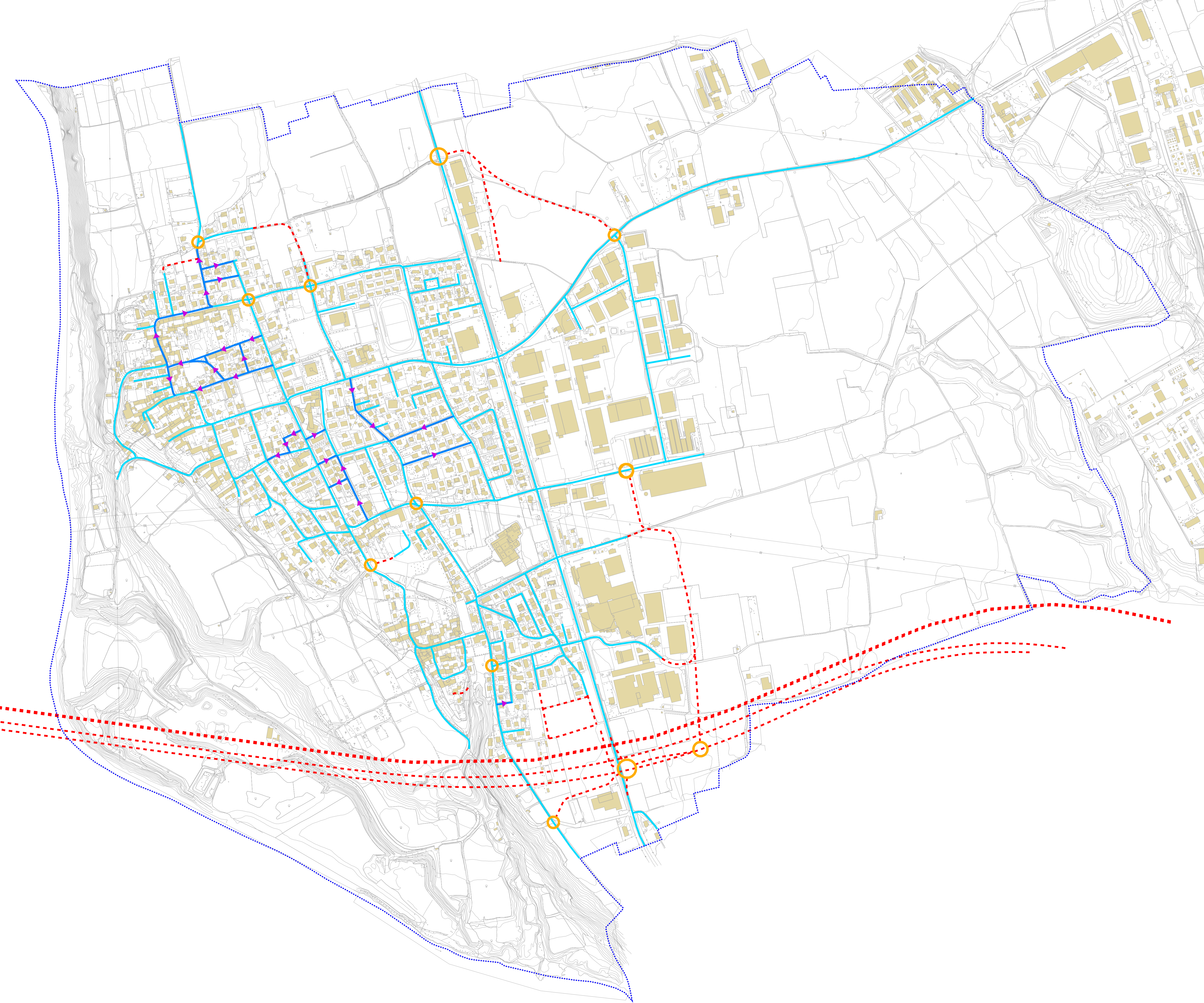


- LEGENDA:**
-  confine comunale
 -  rotonde in previsione
 -  viabilità in previsione
 -  viabilità a senso unico
 -  reticolo viario



COMUNE DI
BOTTANUCO
 PROVINCIA DI BERGAMO
 VARIANTE GENERALE N. 1
 PIANO DELLE REGOLE



R2STUDIO
via Don Carlo Botta, 9 - 24122 Bergamo tel. fax 035 270074

PROGETTO DEL PIANO
 Progettista urbanista
 arch. Alessandro Rota Martir
 Consulente
 arch. Matteo Riva
 Consulente storico
 arch. Paolo Mazzariol

PIANO DI GOVERNO DEL TERRITORIO 2014